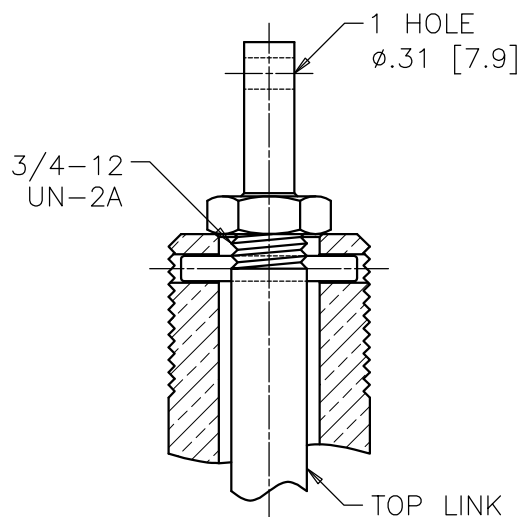


TITLE IEEE STANDARD BUSHING

PRC BUSHING

QUICK LINK BOTTOM CONNECTION
JOINT LOCATION .75 [19.0]
ABOVE FLANGE MOUNTING SURFACE
UNPLATED BOTTOM TERMINAL



TOP LINK

0 TO .50 [12.7]
ADJUSTABLE

1/2-13 UNC-2B
1.62 [41.3] MIN.
USABLE THREAD

ø.38 [9.5]

BOTTOM LINK

.75 [19.0]

1.00 [25.4] MAX.

ø4.50 [114.3] MAX.

SEALING SURFACE

ø6.25 [158.8] MIN.

7.25 [184.2] B.C.

ø10.62 [269.9]

4 HOLES $\phi.88$ [22.2]
EQUALLY SPACED

TEST TAP

45°

Technical drawing of a Quick Link Socket Assembly. The drawing shows a cross-section of the assembly with the following dimensions and components:

- Dimensions:**
 - Overall height: 1.75 [44.4]
 - Distance from bottom to center of holes: .81 [20.6]
 - Overall width: 2.25 [57.2]
- Components:**
 - (2) 1/4-20 UNC-2A CUP POINT SET SCREWS
 - QUICK LINK SOCKET ASSEMBLY
 - 2 HOLES $\phi .62$ [15.9]
 - QUICK LINK TERMINAL

DIMENSIONS IN INCHES [MILLIMETERS]

NOTE TO PURCHASER:
ALL SALES OF PCORE PRODUCTS ARE SUBJECT
TO OUR STANDARD TERMS AND CONDITIONS
AND THE LIMITED WARRANTIES THEREUNDER